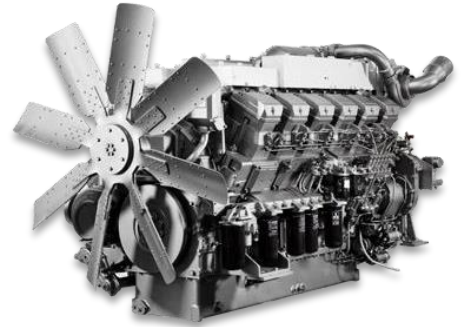


# Mitsubishi China series (650 – 2250 kVA)

Power generators 1500/1800RPM - 50/60Hz - 400-230V

Shanghai MHI Engine Co., Ltd



SME was established jointly by Shanghai Diesel Engine Co., Ltd and Mitsubishi Heavy Industries, Ltd. The Company principally produces various models of engine of S6R2/S12R/S16R series which are mainly applied in land generator set, with the power ranging from 500kW to 2000kW.

SR series products involves currently in the main medium and large size engines manufactured by Mitsubishi Heavy Industries, Ltd. The products are well sold in European and American markets and are highly recognized by the users in China. The series diesel engines include the land power station meeting American EPA2 emission standard and marine diesel engine meeting IMO2 emission standard.

The Company is located at Yangpu District of Shanghai City (located in the plant of Shanghai Diesel Engine Co., Ltd) and went into production in 2013 with the expected production program to the annual output of 5,000 sets of SR series by 2020.

Genset Model	Power				Engine Model	Cylinders & Aspiration	Base Fuel Tank	Fuel Consumption	Open Type Base Fuel Tank Capacity	Emission	Control Panel	Dimensions	Weight
	Prime Power		Standby Power										
	kW	kVA	kW	kVA									
SP 7 MT	5.6	7	6.4	8	L3E-65SAG	3L/NA	20	2	40	Stage II	comAp	1050×600×860	280
SP 10 MT	8	10	8.8	11	S3L2-65SAG	3L/NA	14	3	40	Stage II	comAp	1090×600×880	330
SP 15 MT	12	15	13.2	16.5	S4L2-65SAG	4L/NA	12	4.1	50	Stage II	comAp	1150×600×900	350
SP 31 MT	25	31	27.5	34	S4S-65SAGB	4L/NA	12	7.3	90	Stage II	comAp	1450×600×1000	530
SP 45 MT	36	45	40	50	S4K-D65SAG	4L/NA	12	10.2	120	Stage II	comAp	1750×780×1200	620
SP 60 MT	48	60	53	66	S4K-D765SAG	4L/TC	12	13	160	Stage II	comAp	1750×780×1200	620
SP 90 MT	72	90	80	100	S8K-DT65SAG	8L/TC	12	19.2	230	Stage II	comAp	2100×860×1300	820
SP 650 MT	520	650	572	715	S6R2-PTA-C	6L/TCW	8	139	1100	N/A	comAp	3500×1400×1930	5850
SP 750 MT	600	750	660	825	S6R2-PTAA-C	6L/TCA	6	170	1020	N/A	comAp	3850×1720×1950	5950
SP 1000 MT	800	1000	880	1100	S12H-PTA	12V/TCW	N/A	217	N/A	N/A	comAp	4450×1645×2440	8080
SP 1250 MT	1000	1250	1100	1375	S12R-PTA-C	12V/TCW	N/A	286	N/A	N/A	comAp	4350×2000×2330	10500
SP 1375 MT	1100	1375	1200	1500	S12R-PTA2-C	12V/TCW	N/A	281	N/A	N/A	comAp	4350×2000×2330	11000
SP 1500 MT	1200	1500	1320	1650	S12R-PTAA2-C	12V/TCA	N/A	308	N/A	N/A	comAp	5100×2200×2500	12500
SP 1700 MT	1360	1700	1500	1875	S16R-PTA-C	16V/TCW	N/A	310	N/A	N/A	comAp	5100×2250×2560	13500
SP 1875 MT	1500	1875	1650	2063	S16R-PTA2-C	16V/TCW	N/A	418	N/A	N/A	comAp	5150×2250×2560	14000
SP 2000 MT	1600	2000	1800	2250	S16R-PTAA2-C	16V/TCA	N/A	432	N/A	N/A	comAp	5650×2250×2700	15500
SP 2250 MT	1800	2250	2000	2500	S16R2-PTAW	16V/TCW	N/A	476	N/A	N/A	comAp	6720×2800×3100	18600