

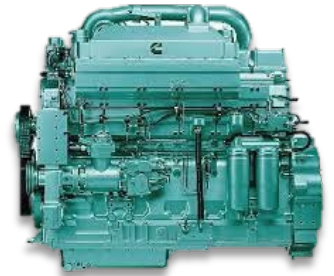
# Cummins series (20 - 350 kVA)

Power generators 1500/1800RPM - 50/60Hz - 400-230V

## Features :

Cummins is in the world's largest company in designing, manufacturing, selling diesel engines and compressed natural gas engines. The most famous Cummins company in China is DCEC Cummins and CCEC Cummins (a Sino-American joint venture which founded in Oct, 1995, located in Chingqing city).

As the engine industry's biggest foreign investor in China, Cummins own eight joint ventures and sole-funded manufacturing enterprises in China. Dongfeng Cummins produce B, C and L series diesel engines, and Chongqing Cummins mainly manufacture M, N and K series diesel engines.



## CU Series Specifications

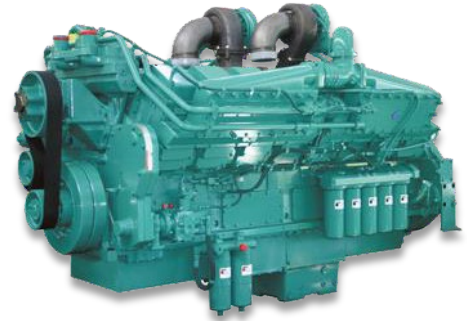
Model	kVA		kW		Engine Model	Cylinder & Aspiration	Displacement (L)	Governor	Fuel consumption at full load (L/h)	Mecc Alte Alternator	Weight (kg)	Dimension L x W x H (mm)
	Prime	Standby	Prime	Standby								
SP 20 CU	20	22	16	18	4B3.9-G1	4i / NA	3.9	MG	5.2	ECP28-1L/4	830	1725 x 950 x 1500
SP 25 CU	25	28	20	22	4B3.9-G1	4i / NA	3.9	MG	6.7	ECP28-2L/4	830	1725 x 950 x 1500
SP 30 CU	30	33	24	30	4BT3.9-G1	4i / TC	3.9	MG	12.8	ECP28-VL/4	950	1870 x 950 x 1500
SP 40 CU	40	44	32	36	4BT3.9-G1	4i / TC	3.9	MG	14.7	ECO32-3S/4	950	1870 x 950 x 1500
SP 50 CU	50	55	40	44	4BTA3.9-G2	4i / TC	3.9	EG	9.8	ECO32-1L/4	950	1870 x 950 x 1500
SP 60 CU	60	66	48	53	4BTA3.9-G2	4i / TC	3.9	EG	13.1	ECO32-2L/4	990	1870 x 950 x 1500
SP 80 CU	80	88	64	70	6BT5.9-G2	6i / TC	5.9	EG	22.1	ECP34-1S/4	1,200	2250 x 950 x 1630
SP 100 CU	100	110	80	88	6BT5.9-G2	6i / TC	5.9	EG	25.0	ECP34-2S/4	1,200	2250 x 950 x 1630
SP 113 CU	113	125	90	100	6BTA5.9-G2	6i / TC	5.9	EG	27.0	ECP34-1L/4	1,200	2250 x 950 x 1630
SP 125 CU	125	138	100	110	6BTAA5.9-G2	6i / TC	5.9	EG	31.0	ECP34-1L/4	1,240	2250 x 950 x 1630
SP 150 CU	150	165	120	132	6CTA8.3-G2	6i / TC	8.3	EG	40.0	ECP34-2L/4	1,690	2420 x 950 x 1690
SP 188 CU	188	200	150	160	6CTA8.3-G2	6i / TC	8.3	EG	45.0	ECO38-1SN/4	1,690	2420 x 950 x 1690
SP 200 CU	200	220	160	176	6CTAA8.3-G2	6i / TC	8.3	EG	50.0	ECO38-2SN/4	1,810	2540 x 950 x 1750
SP 225 CU	225	250	180	200	6LTAA8.9-G2	6i / TC	8.9	EG	53.0	ECO38-3SN/4	2,030	2580 x 1020 x 1870
SP 250 CU	250	275	200	220	NT855-GA	6i / TC	14.0	EG	53.0	ECO38-1LN/4	3,007	2950 x 1200 x 1740
SP 275 CU	275	300	220	240	NTA855-G1A	6i / TC	14.0	EG	61.0	ECO38-2LN/4	3,260	3050 x 1200 x 1740
SP 313 CU	313	350	250	280	NTA855-G1B	6i / TC	14.0	EG	68.0	ECO38-3LN/4	3,340	3050 x 1200 x 1740
SP 350 CU	350	385	280	308	NTA855-G2A	6i / TC	14.0	EG	82.0	ECO38-3LN/4	3,355	3050 x 1200 x 1740

# Cummins series (375 - 2250 kVA)

Power generators 1500/1800RPM - 50/60Hz - 400-230V

## Features :

Cummins is in the world's largest company in designing, manufacturing, selling diesel engines and compressed natural gas engines. The most famous Cummins company in China is DCEC Cummins and CCEC Cummins (a Sino-American joint venture which founded in October, 1995, located in Chingqing city).



As the engine industry's biggest foreign investor in China, Cummins own eight joint ventures and sole-funded manufacturing enterprises in China. Dongfeng Cummins produce B, C and L series diesel engines, and Chongqing Cummins mainly manufacture M, N and K series diesel engines.

## CU Series Specifications

Model	kVA		kW		Engine Model	Cylinder & Aspiration	Displacement (L)	Governor	Fuel consumption at full load (L/h)	Mecc Alte Alternator	Weight (kg)	Dimension L x W x H (mm)
	Prime	Standby	Prime	Standby								
SP 375 CU	375	412	300	329	NTAA855-G7	6i / TC	14.0	EG	85.4	ECO40-1S/4	3,485	3250 x 1230 x 1800
SP 400 CU	400	440	320	352	NTAA855-G7A	6i / TC	14.0	EG	89.2	ECO40-1S/4	3,485	3250 x 1230 x 1800
SP 450 CU	450	495	360	396	KTA19-G3	6i / TC	18.9	EG	111.0	ECO40-2S/4	4,166	3380 x 1390 x 2050
SP 500 CU	500	550	400	440	KTA19-G4	6i / TC	18.9	EG	120.0	ECO40-3S/4	4,166	3380 x 1390 x 2050
SP 600 CU	600	660	480	528	KTA19-G8	6i / TC	18.9	EG	119.0	ECO40-1.5L/4	4,658	3670 x 1680 x 2190
SP 750 CU/I	750	825	600	660	VTA28-G6	V12 / TC	28.0	EG	170.0	ECO40-VL/4	7,190	4410 x 1720 x 2170
SP 750 CU/C	750	825	600	660	KTA38-G2	V12 / TC	37.8	EG	167.0	ECO40-VL/4	7,190	4410 x 1720 x 2170
SP 800 CU	800	880	640	704	KTA38-G2B	V12 / TC	37.8	EG	172.0	ECO43-1SN/4	7,190	4410 x 1720 x 2170
SP 900 CU	900	990	720	792	KTA38-G2A	V12 / TC	37.8	EG	191.0	ECO43-2SN/4	7,359	4410 x 1720 x 2170
SP 1000 CU	1000	1100	800	880	KTA38-G5	V12 / TC	37.8	EG	209.0	ECO43-1LN/4	7,777	4300 x 2080 x 2190
SP 1125 CU	1125	1250	900	1000	KTA38-G9	V12 / TC	37.8	EG	256.0	ECO43-2LN/4	8,156	4400 x 2080 x 2190
SP 1250 CU	1250	1375	1000	1100	KTA50-G3	V12 / TC	45.8	EG	259.0	ECO43-2LN/4	9,281	5000 x 2080 x 2290
SP 1375 CU	1375	1500	1100	1200	KTA50-G8	V16 / TC	50.3	EG	289.0	ECO46-1S/4	10,371	4960 x 2200 x 2620
SP 1500 CU	1500	1650	1200	1320	KTA50-GS8	V16 / TC	50.3	EG	301.0	ECO46-1S/4	10,762	5170 x 2120 x 2360
SP 1800 CU	1800	1980	1440	1584	QSK60G3	V16 / TC	60.2	EG	385.0	ECO46-2S/4	13,846	5720 x 2250 x 2660
SP 2000 CU	2000	2200	1600	1760	QSK60G4	V16 / TC	60.2	EG	394.0	ECO46-1L/4	14,083	5720 x 2250 x 2660
SP 2250 CU	2250	2475	1800	1980	QSK60G13	V16 / TC	60.2	EG	399.0	ECO46-1.5L/4	15,517	6150 x 2580 x 2740